

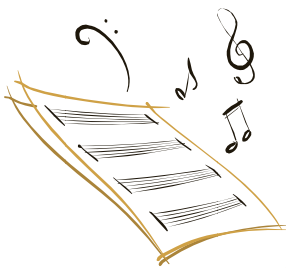
**Please join** *Keweenaw Land Trust* **in some winter fun**

**Saturday FEBRUARY 21**



**3 p.m.** Guided back-country or trail ski, or snowshoe hike at Churning Rapids meet at M203 and Christensen Road (about 4 miles north of Hancock) OR carpool from the American Legion Hall around 2:45 if you want

**5:30 – 8:30 p.m.** Potluck dinner and music at the American Legion Hall 1320 W Quincy in Hancock (M203 just past US41) Bring tableware and a dish to pass



**Rhythm 203**



KLT's own **Curtis Perala**

( Marsin Property Manager)

on keyboards and accordion



Special guest **Greg Merkle** -- dynamic solo acoustic guitar a guitar virtuoso who performs his own remarkable compositions. His dizzying finger-tapping style is intricately technical yet intrinsically beautiful. Greg enjoys a cult-like following in his native New Jersey, and has also opened for musicians like Taj Mahal, John Hammond Jr., Iris Dement and Johnny Cash.

Greg's CD '**BIG GUITAR**' on sale at the hall – intricate yet simple and unpredictable music for the solo guitar

*" . . . it would be a gross understatement to not touch on the technical prowess of this guitarist. There are moments on this CD where you would swear there are three people playing but this is just a guy and his guitar"*

***This event is one of our new and ongoing series of***



**OUTINGS**

*fun and informal guided explorations on KLT protected lands*

Next *OUTING* March 15 – ice fishing for kids at the Marsin Center with hot cocoa by the fire upcoming events on winter fire building, spring frogs and wildflowers, bushwhacking/orienteering

www.KeweenawLandTrust OR 906-482-0820 for more information